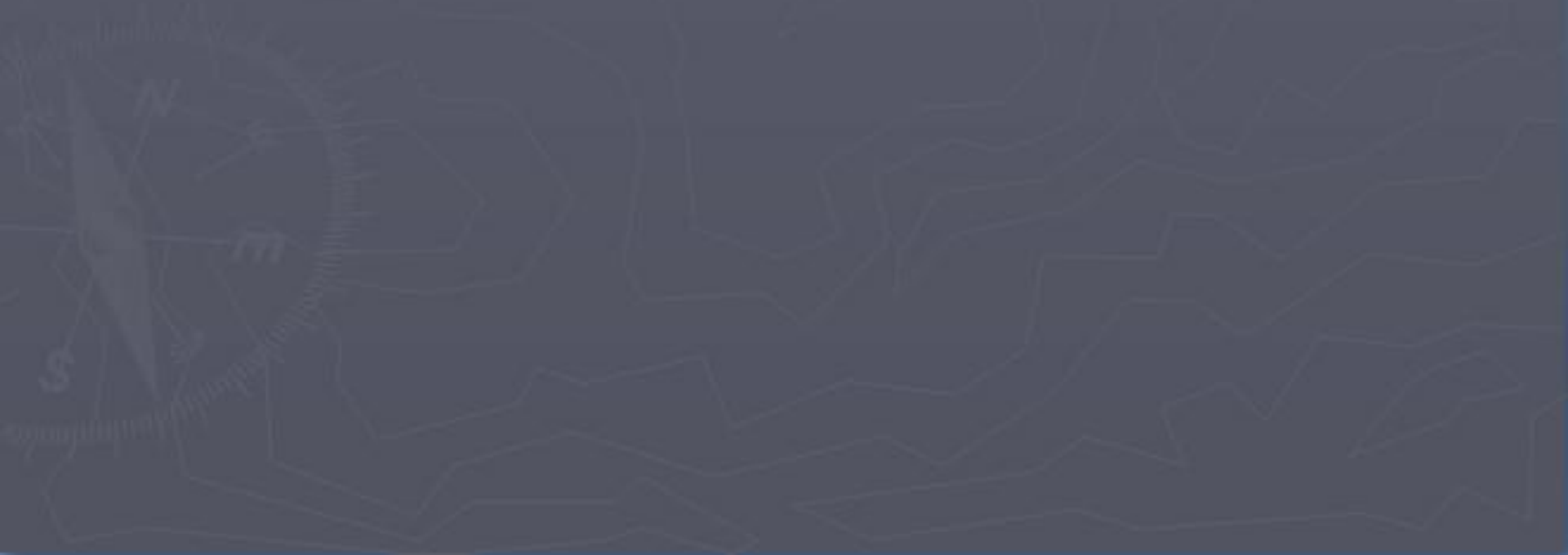
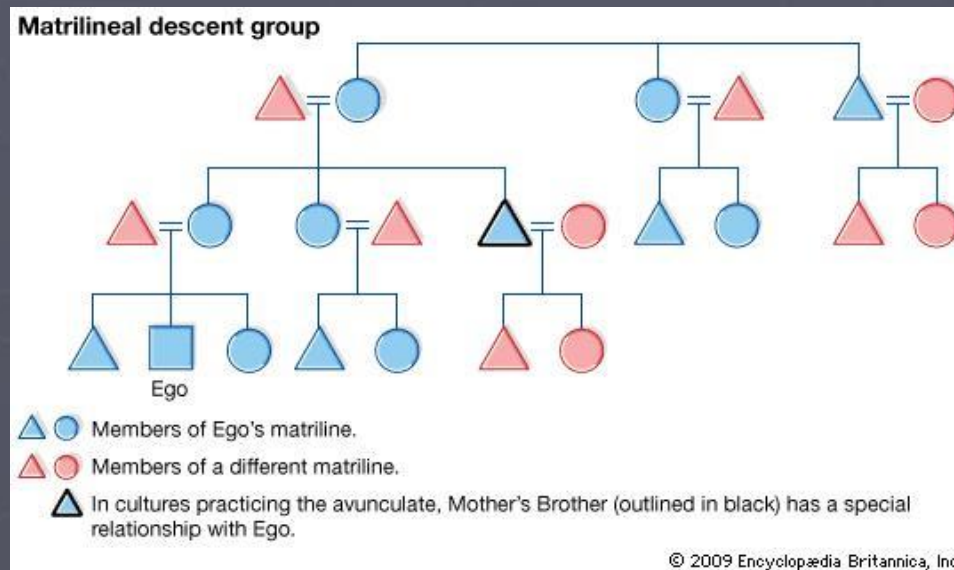


Differing Ideas of Gender Norms



Matrilineal vs. Patrilineal Societies

- In Patrilineal societies the decent and lineage is marked through the male line
 - Vice Versa in Matrilineal
 - Often power structure associated with lineage



Matriarchy vs. Patriarchy

- In a Matriarchy the power structure revolves around women
 - Ex. Decisions such as leaders
 - Often associated with lineage
 - Leaders descendants of female line
- Matriarchal societies primarily rural folk cultures



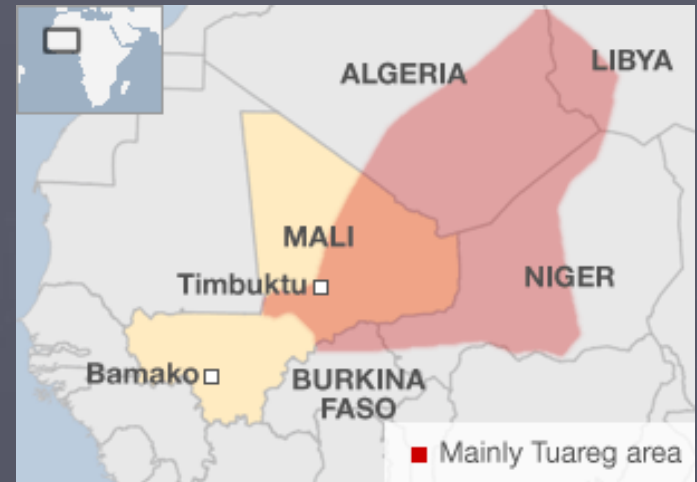
Case Study: Mosuo

- Clustered around lake Lugu in Southern China
- Matrilineal Society
 - Women responsible for lineage
 - Men live with mothers, not with children
 - Walking Marriages
 - No official ceremony
 - Men visit at night and then go home
 - Easily broken off



Case Study: Tuareg

- Matrilineal but not matriarchal
- Nomadic Berber peoples of Western Sahara
- Muslim society
 - Men wear veils, not women
 - Believed that women were created before men



Popular Culture and Gender Norms

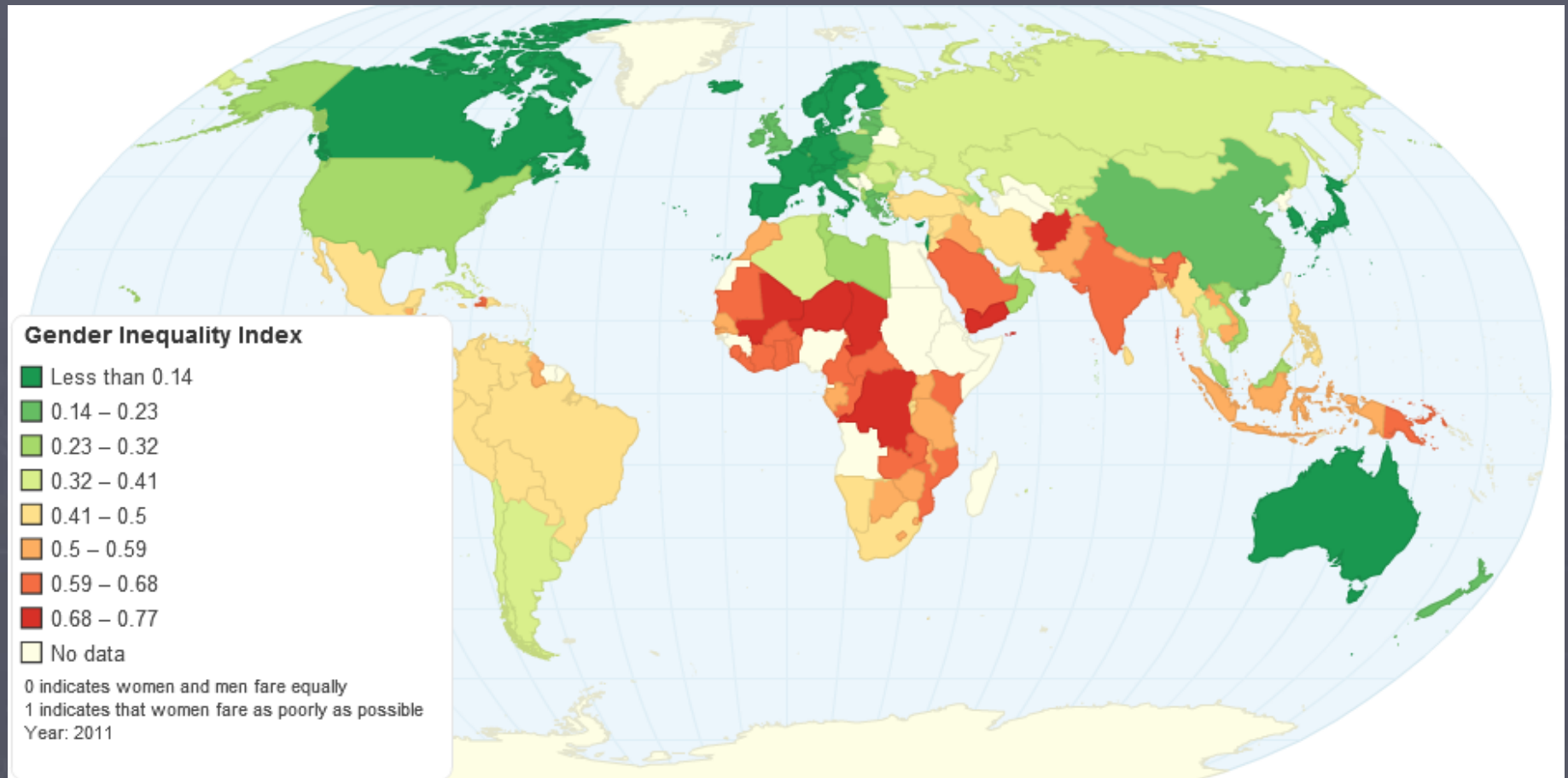
- Contemporary culture still based off of patriarchal model of society
 - Generally shifting towards a more equal balance of power socially, economically, and politically
- Children still expected to conform to cultural norms



The Push for Gender Equality in the United States

- Women's rights movement originated in 19th Century has been shifting society since
 - Slowly but eventually
 - 1848 - Seneca Falls Convention
 - 1919 - 19th Amendment passed allowing women the right to vote
 - 1963 - Commission on the Status of Women Established
 - Goal: Fairer hiring practices, paid maternity leave, cheaper child care
 - 1973 - Roe v. Wade decision allows women private and safe access to abortion
 - 2013 – Women allowed in combat roles in US Military

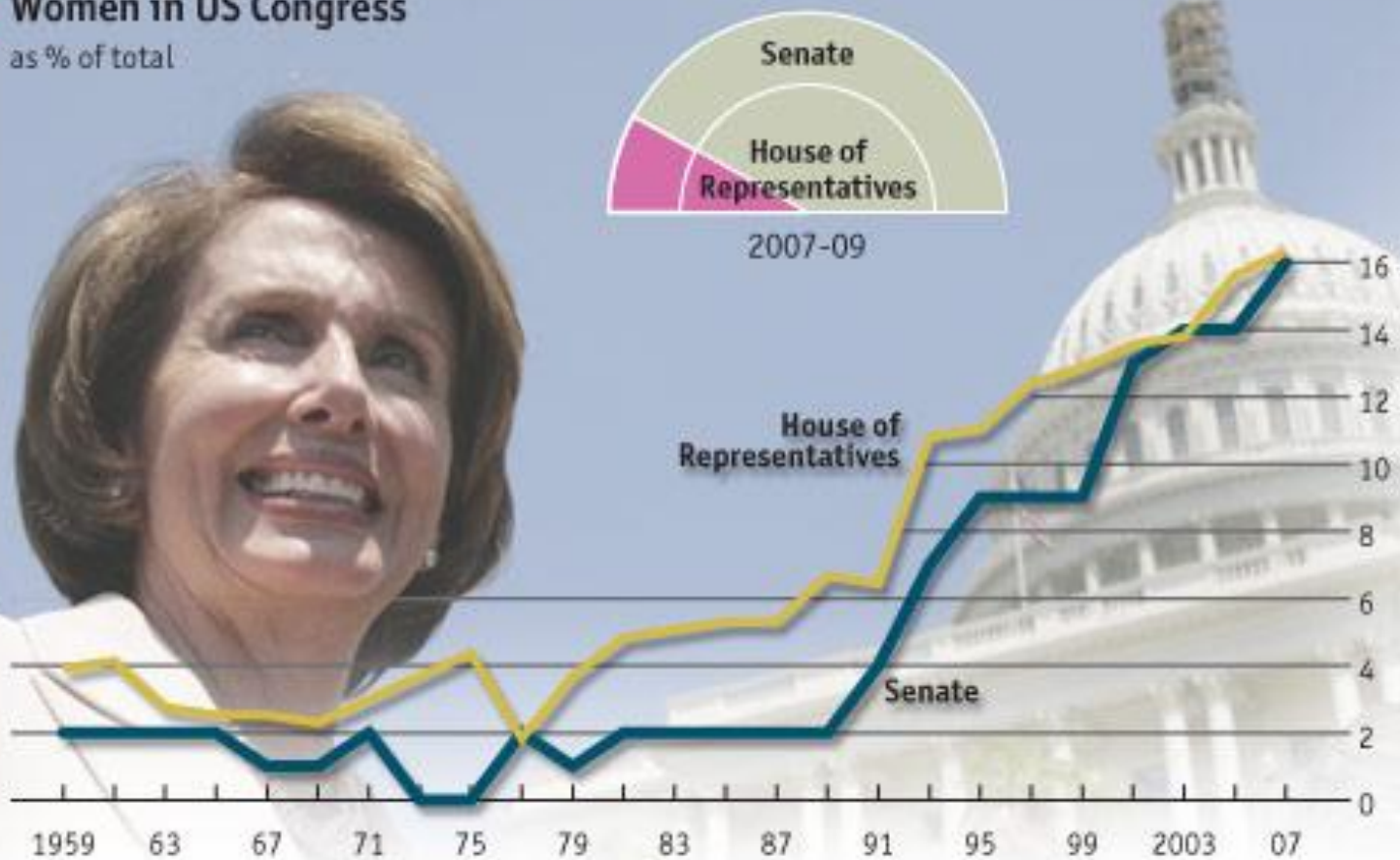
Global Gender Inequality



Growing Power of Women

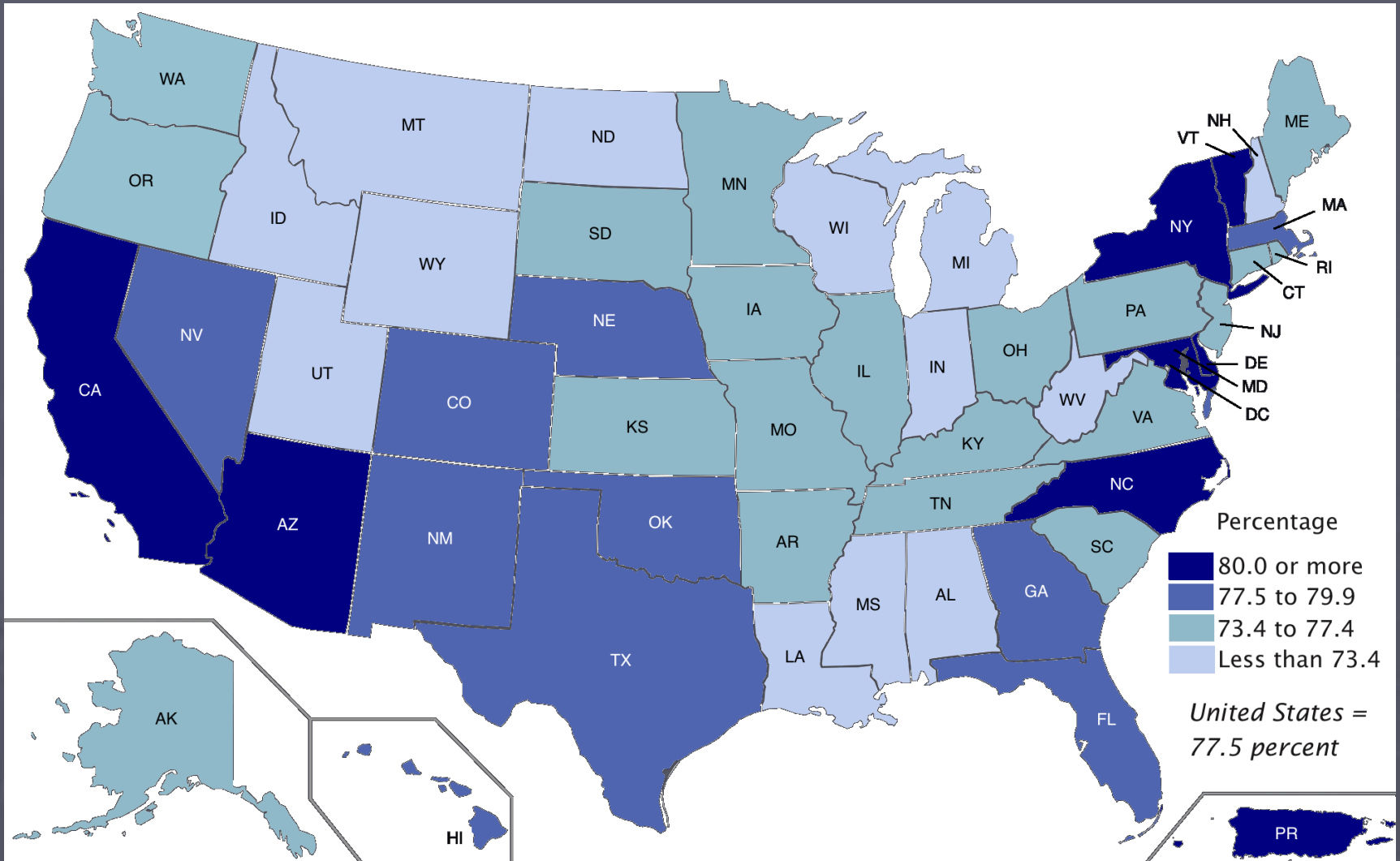
Women in US Congress

as % of total

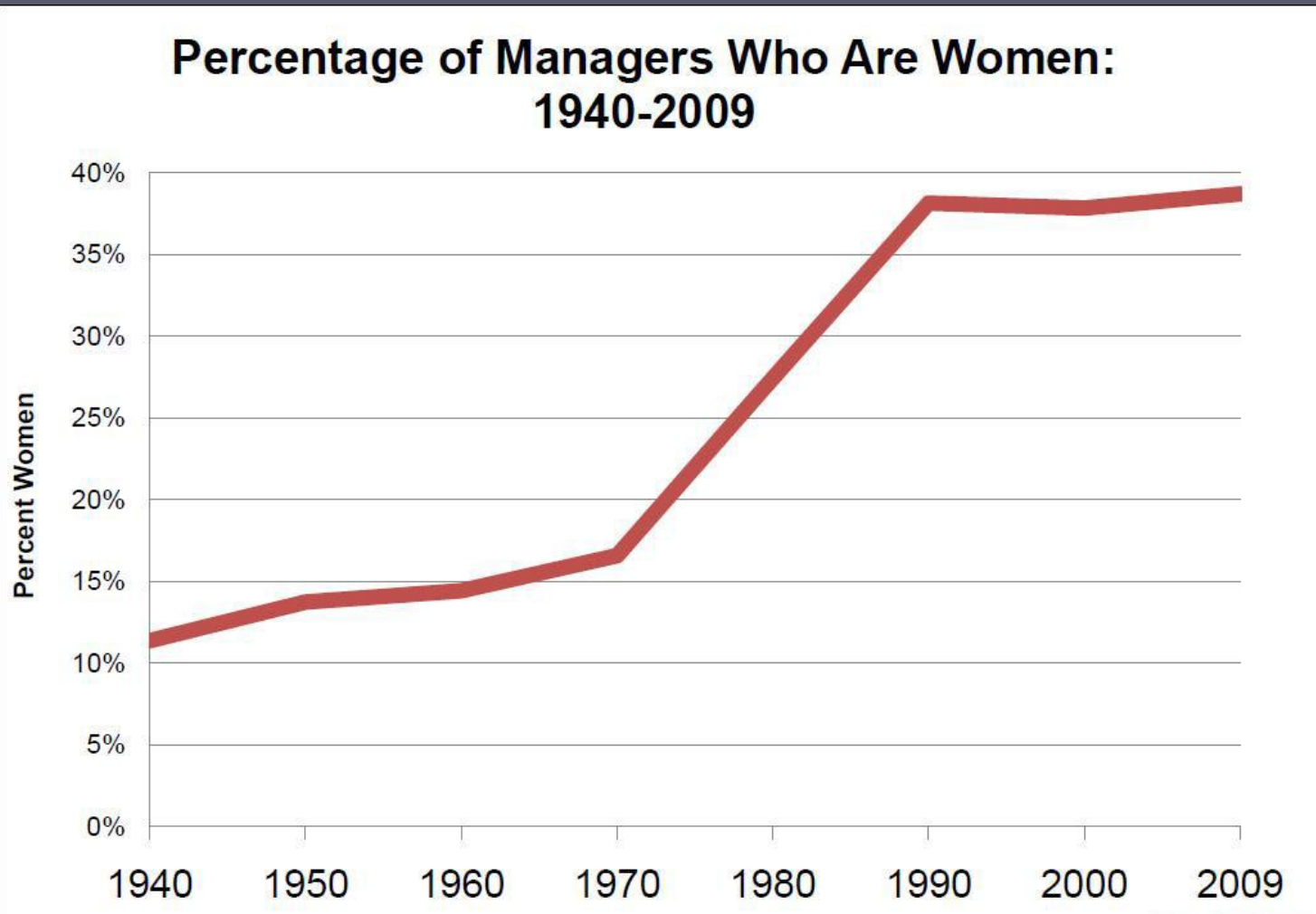


Source: Centre for American Women and Politics, Rutgers University

Income Wages Gap (2014)



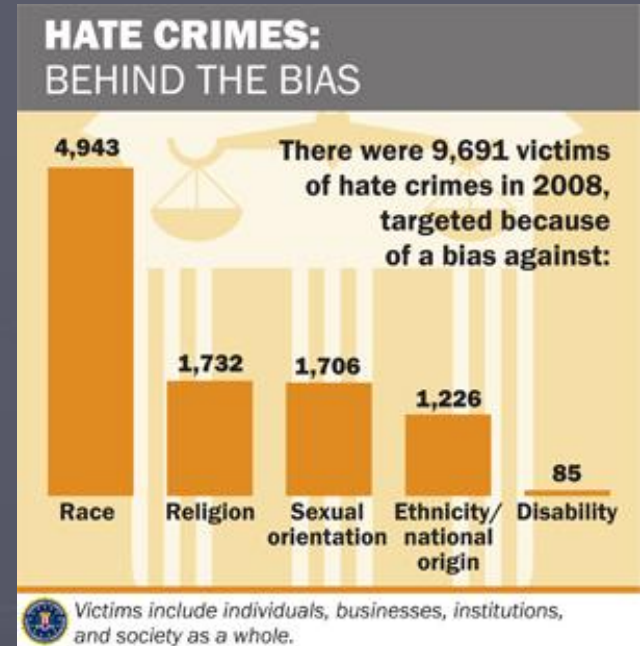
Growth of Women in Management



Source: U.S. Census Bureau, decennial census 1940 to 2000, 2009 American Community

Sexuality Norms

- Homosexuality and bisexual relations often considered taboo by modern society
 - Norms reinforced by religious ideals
 - Slowly being accepted but still highly restricted in some societies



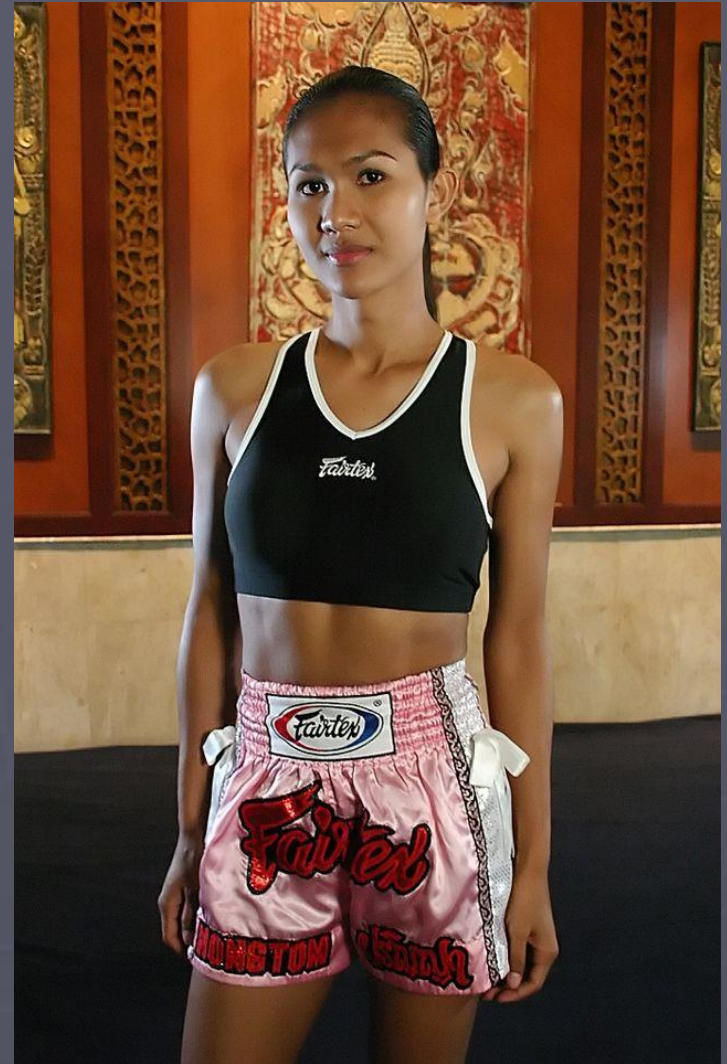
Transgender

- Gender identity, expression, or behavior do not conform with societal gender norms assigned
 - Ex. person born a female but dresses and acts like a man
- Complication of identity
 - Either hide identity or seek gender modification
 - Including gender reassignment
 - High rates of suicide



Case Study: Kathoey of Thailand

- Primarily refers to “cross dressing” men in Thailand
 - Socially accepted as “third gender”
 - Often have surgeries to appear more feminine



LGBT Community

- Lesbian Gay Bisexual Transgender
 - Support/activist group
 - Fighting for equal rights and treatment of community
 - Gay Straight Alliance (GSA)
 - Support by people who are not LGBT

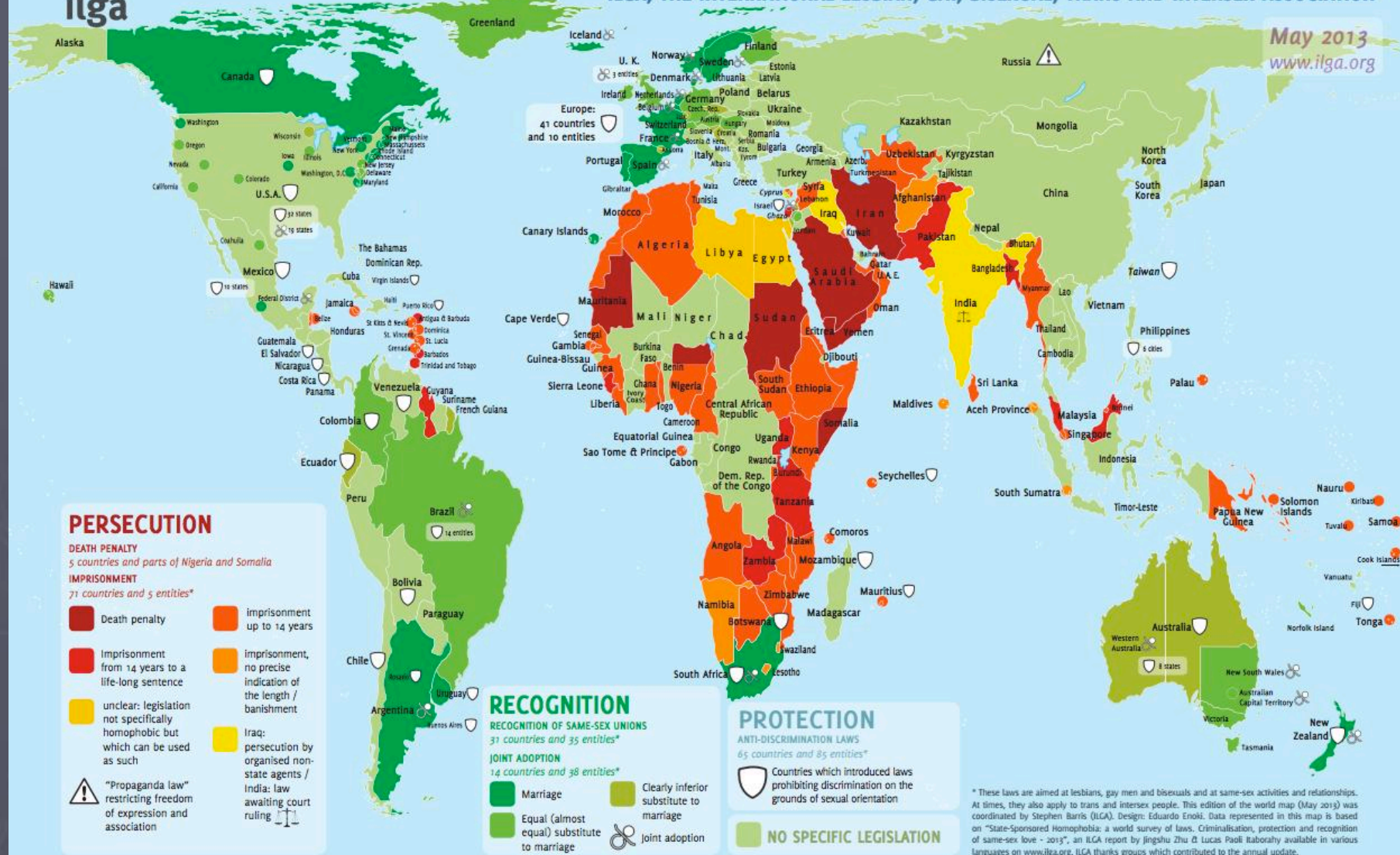


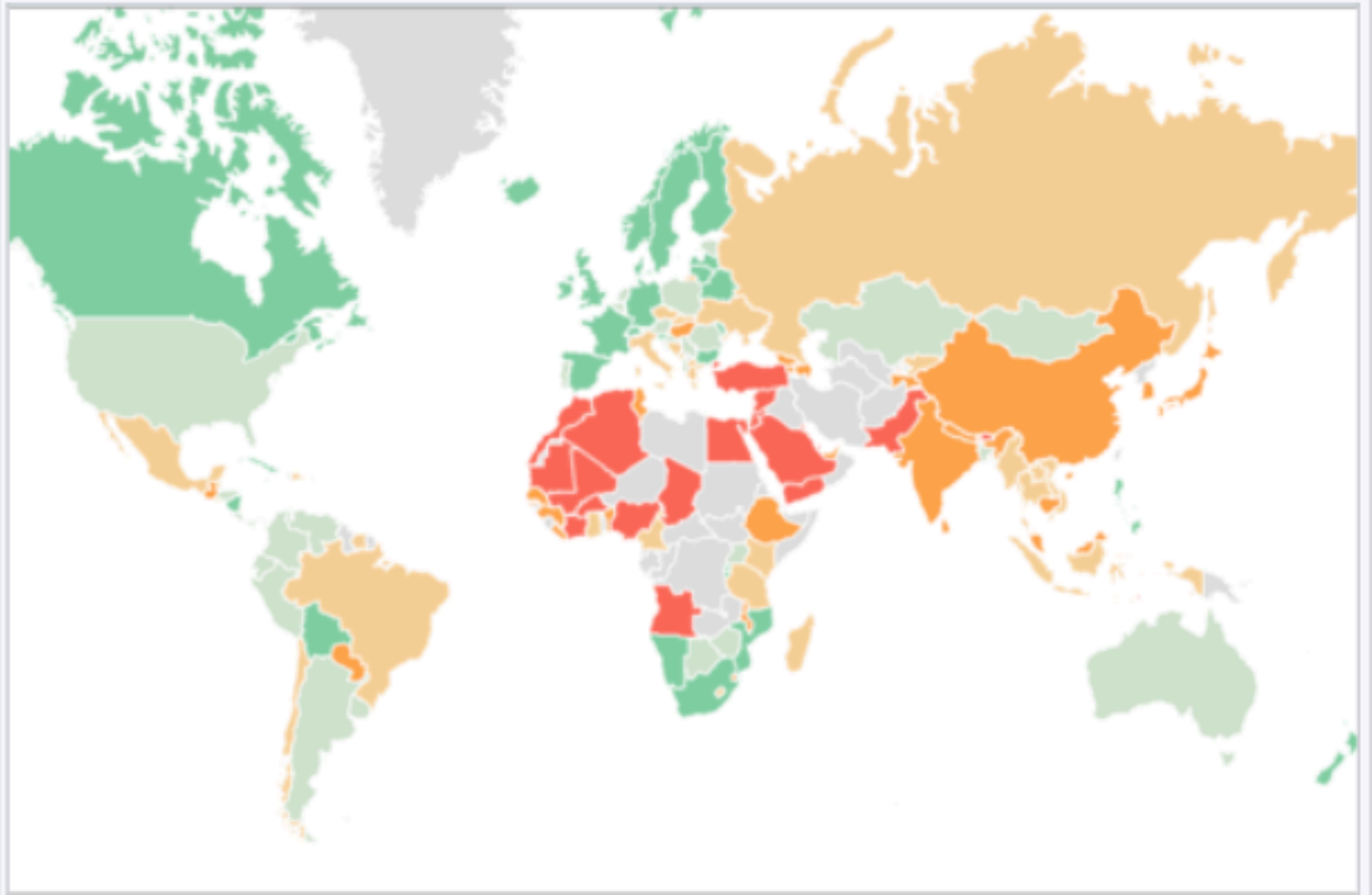


LESBIAN AND GAY RIGHTS IN THE WORLD

ILGA, THE INTERNATIONAL LESBIAN, GAY, BISEXUAL, TRANS AND INTERSEX ASSOCIATION

May 2013
www.ilga.org





The WEF Gender gap index world map for 2017^[10]

